



**USB DMX Controller DMX512A**

**User's Manual**



**Introduction**

USB DMX is a convenient way forward to control lighting equipment. It is light weight, robust, powerful and last but not least very economical. When coupled with free lighting control software available on the Web its quality and performance is unmatched.

**Package Contents**

USB DMX Cable  
CD with software

**Requirements**

Computer Pentium IV or better  
Windows (XP, Vista, 7) 32 or 64 bit  
512 MB RAM  
Free USB port (1.1 or 2.0)  
CD-ROM Drive for loading drivers

**MAC OSx:** 10.5 or later Intel based

For instruction on driver and application software installation under MAC OSx please follow the instruction in the "OSxInstallationGuide.pdf" located in the folder "OSX" in the supplied CD.

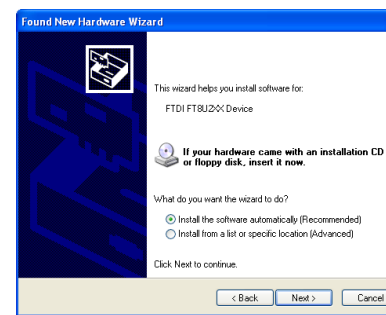
**Installation**

Please follow the steps below to install the required drivers for the USB DMX Controller

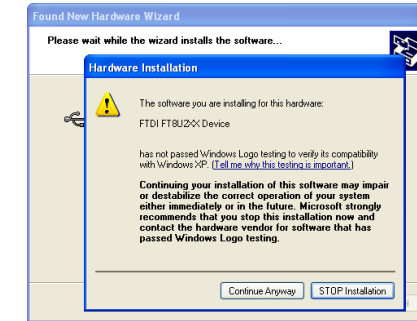
1. Insert the supplied CD-ROM in the disk drive
2. From "My Computer" select the CD drive and browse to it
3. Run file "CDM20814\_Setup.exe" by double clicking on it
4. On Windows 7 and Vista a warning may popup asking for authorization to proceed.
5. Click on "Yes" to authorize the installation.
6. The installation will commence in a DOS box and which will disappear upon completion of the installation.

**Note:** Windows 7 and Vista users are advised to do the installation in Administrator mode. This can be done by Right clicking on the installation file and choosing "Run As Administrator". Windows 7 and Vista user may not see the notifications shown in Step 7 through to 12.

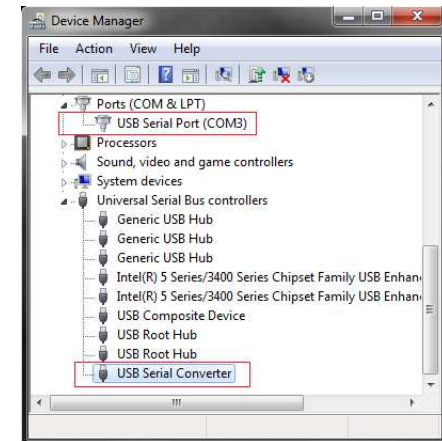
7. On Windows XP will detect the cable and show following dialog
8. In above window select "No, not this time" and click "Next" to continue



9. Select the option "Install the software automatically" and click "Next" to continue.
11. Windows may show a security warning, ignore and select "Continue Anyway" to proceed
12. Click "Finish" to complete the driver setup



13. To verify correct install please open Windows "Device Manager" and look under the "Ports" and "Universal Serial Bus Controller" it should have entries similar to the one shown in screenshot below



**Uninstall**

To uninstall the drivers use the utility "CDMuninstallaerGUI.exe" located in the Windows\Drivers folder in the CD. Please follow the instructions listed in the "Uninstaller\_ReadMe.pdf" in the same folder for uninstall.

**Technical Specifications**

- Data rate 256Kbps
- DMX Channels up to 512
- USB Powered
- USB 1.1 and USB 2.0 compatible
- Physical layer conforms to EIA/TIA-485
- ESD protection for DMX side
  - ±15kV Human Body Model (HBM)
  - ±15kV EN61000-4-2 Air Gap Discharge
  - ±8kV EN61000-4-2 Contact Discharge
- Operating temperature: 0-50 Degree Celsius
- Cable Length : 1.8 meters
- 3 or 5 pin XLR connector
- DMX termination included
- False triggering protection



Appropriate protection against high voltages and lightning strikes should be used if such a hazard exists in the operating environment of the product



**Supported Software**

The USB DMX Controller is verified for use with following software,

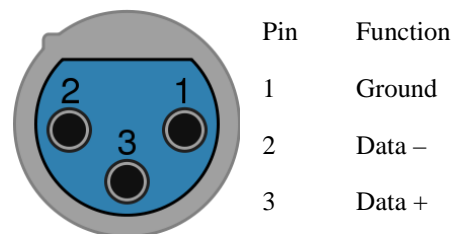
- FreeStyler 3.x
- DMXControl 2.10
- MasterPeace
- StageConsole
- Abuelites 0.7
- Q Light Controller

The USB DMX Controller is compatible with Enttec Open USB DMX, NEXTEC Afterglow Slim. Hence any software capable of using the aforementioned interfaces can use the USB DMX Controller.

Please browse the "DMX\_Software" directory in the supplied CD for installation of the DMX control software, each folder contains a "Readme.txt" file explaining the installation process for the software and how to configure the software for USB DMX Controller cable.

**Pinouts**

The product uses 3 pin XLR female connector which has the following pinouts as mandated by the DMX standard.



In situations where the fixture has a 5 pin XLR DMX connector it will be necessary to use a 3pin to 5 pin converter. The connection arrangement of the converter is shown below

Pin	3 Pin XLR (Male)	5 Pin XLR (Female)
1	Ground	Ground
2	Data -	Data -
3	Data +	Data +
4	-	Not Connected
5	-	Not Connected

**DMX512A-M and DMX512A-MT**

The DMX512A-M/MT is supplied in module form for integration into OEM products.

DMX512A-M and DMX512A-MT are functionally equivalent to DMX512A.

The DMX512A-M is fitted with a 3 pin XLR connector where as DMX512-MT is fitted with a 3pin 5.08mm Screw Terminal block.

A USB Type B connector is provided for connecting the module to the PC.

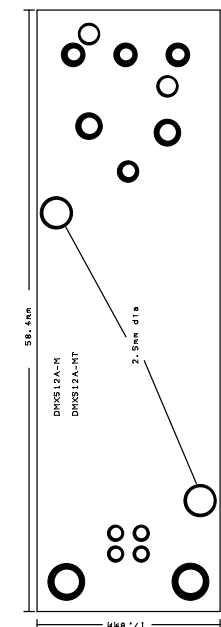
Both have mounting holes for fixing the circuit board in an enclosure.

Pinouts of DMX512A-MT screw terminals are shown below



**Dimensions**

The module is 58.4 x 17.8mm. The mounting holes are 10.7mm and 38.6mm from the USB side edge of the module. The diameter of the mounting holes is 2.5mm



**Contact Us**

For product support please email us at: [support@bitbang.co.uk](mailto:support@bitbang.co.uk)  
For all other enquires email us at: [sales@bitbang.co.uk](mailto:sales@bitbang.co.uk)

**Disclaimer**

This device should not be used without proper consideration and design of associated system architecture and redundant safety features in applications where failure may result in death or injury. The manufacturer accepts no responsibility for injury, death or loss human or material caused by the use or misuse of this device.